

Your town is being prepared.
How about you ?



EPTB AUDE
SMMAR
DES RIVIÈRES & DES HOMMES

DICRI m



MUNICIPAL INFORMATION DOCUMENT
ON MAJOR RISK

City of **Capendu**
2022



Prevention is our priority

Public information and awareness about major risks in our town are key to effective prevention.

The municipal council has decided to produce a local emergency action plan (PCS) to maintain public safety and better protect residents' property, as well as the surrounding environment. The purpose of the plan is to define preventive and contingency measures to deal with a crisis event. Developing this PCS also meets a statutory obligation.

This municipal information document on major risks (DICRIM) features hazards that pose a threat to our local area. It provides a reminder of safety guidelines to be followed, warning systems provided by the municipal council, emergency call numbers and what to do if the town was to experience an emergency. This document is a summarised English language version of the DICRIM which I encourage you to read and keep in a safe place.

If the worst does occur, staying alert and helping one another are vital and also life-saving.

The Mayor of Capendu

CONTENTS

	3	How am I warned?		7	Dam failure risks
	4	Flood risks		7	Hazardous material transport risks
	4	Wildfire risks		8	Health risks
	5	Ground movement risks		8	Notes
	5	Earthquake risks		9	Flood event guidance
	6	Weather event risks		10	Useful websites and telephone numbers

HOW AM I WARNED ?

If a serious event occurs, the Mayor must alert the local population. There are various ways of doing this in your town :



RADIO



SOCIAL NETWORKS

Facebook : Capendu au pied de l'alaric



DOOR-TO-DOOR



TELEPHONE CALLS



LOUD HAILERS



DISPLAY PANELS



TEXT MESSAGES

www.mairie-capendu.fr/alerte-sms-capendu_fr.html



WEBSITES

www.mairie-capendu.fr



MUSTER POINTS

- 1- Cultural centre - 43°11'06.7"N 2°33'18.8"E
- 2- College Gymnasium - 43°11'05.2"N 2°33'52.3"E

myPredict,
l'appli qui vous met en **sécurité.**



- Avertissements personnalisés 24h24 partout dans le monde
- Visualisation des précipitations
- Information sur les risques en cours
- Conseils préventifs pour adopter les bons réflexes
- Accessible à tous pour votre sécurité et vos proches

Disponible sur  

FIND INFO ON CURRENT HAZARDS SEE RAINFALL PATTERNS LIVE

Know what to do when
with safety advice

Download mypredict





FLOODS

BEFORE

- Move furniture and valuable items to safety
- Block doors and windows, tether heating oil tanks
- Remove vehicles parked near riverbanks

DURING

- Don't try to meet close friends and family or collect your children from school, don't drive, postpone your journeys
- Stay informed and listen out for guidance from the authorities in the media, social networks and official websites
- Check on family members, neighbours and vulnerable people
- Shelter on higher ground, don't access basement car parks
- Don't go out on flooded roads by car or on foot

AFTER

- Keep up to date with any changes in the situation
- Air and disinfect rooms in your house
- Turn the heating on as soon as possible
- Don't switch the electricity back on until the system is dry
- Notify your insurance company about the flood as soon as possible



WILDFIRES

BEFORE

- Clear undergrowth from around your house
- Clear gutters where dead leaves can collect

AFTER

- Leave your house wearing protective clothing (leather shoes and gloves, cotton clothes and a hat), inspect your house and watch embers, extinguish any remaining flames without taking unnecessary risks
- Notify your insurance company about the fire as soon as possible

IF YOU SEE A FIRE START

- Call the fire brigade immediately
- If possible, try to contain the fire breathing through a wet cloth or piece of fabric

A PROTECTED HOUSE IS THE BEST FORM OF SHELTER

- Close and hose down shutters, doors and windows
- Block air vents with wet cloths and towels

IN THE COUNTRYSIDE

- Get away from the fire and smoke as soon as possible
- Don't get out of your car
- Switch off any gas or electrical appliances or devices

Safety guidance Key points



Don't use the telephone



Listen to the radio



Stay above ground



Switch off gas and electricity



Don't drive



Close windows and doors



Leave children in school



Move to upper floors

Safety guidance Key points



Don't use the telephone



Close windows and doors



Don't drive



Switch off gas and electricity



Distance yourself from the fire



Take shelter in a permanent building



Leave children in school



Clear any access roads and paths



GROUND MOVEMENTS

SUBSIDENCE

DURING

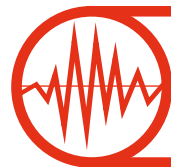
- If inside, use your arms to protect your head, keep away from windows and shelter under a solid piece of furniture
- If outside, shelter in the nearest permanent building

AFTER

- Switch off gas and electricity, evacuate buildings and do not return, don't use the lift (elevator)
- Vacate the dangerous area and go to a muster point
- Follow instructions from the authorities

COLLAPSE / CAVE-IN

- If inside, evacuate the building immediately and do not return, don't use the lift (elevator)
- If outside, vacate the dangerous area and go to a muster point, follow instructions from the authorities



EARTHQUAKES

DURING

- If inside, stand close to a wall, a load-bearing pillar or a solid piece of furniture, don't go near windows
- If outside, don't stand under power lines or objects that might collapse (bridges, ledges, roofs, etc.)
- By car : Stop and do not get off before the end of the tremor
- Do not light a flame

AFTER THE INITIAL TREMOR

- Watch out for aftershocks, don't re-enter buildings
- Switch off gas and electricity
- Don't use lifts (elevators) to leave the building
- Find a safe, open space away from buildings and structures
- Evacuate coastal areas, even well after the earthquake event, due to tsunami risks

ONCE THE EARTHQUAKE IS OVER

- Don't re-enter buildings
- If you have been buried by debris, knock on any walls to alert the emergency services
- Contact neighbours that might need help
- Notify your insurance company of the earthquake as soon as possible

Safety guidance Key points

SUBSIDENCE



Keep away from buildings

CAVE-IN



Shelter under furniture (table)



Evacuate buildings



Evacuate buildings



Follow safety guidance



Switch off gas and electricity



Find a safe place

Safety guidance Key points



Don't use the telephone



Shelter under furniture (table)



No naked flames or sparks



Switch off gas and electricity



Stay out of buildings



Evacuate buildings



Leave children in school



Find a safe place



WEATHER EVENTS

SNOW, ICE, HEATWAVES, THUNDERSTORMS, EXTREME COLD, HIGH WINDS

SNOW / ICE

- Limit any journeys and don't take risks
- Obey traffic restrictions and follow diversions
- Give way to snow ploughs
- Clear snow and salt footpaths in front of your house
- Don't touch fallen power lines

THUNDERSTORMS

- Don't shelter under trees
- If in a car, stay inside and quickly park in a safe, unexposed area, switch off the engine and don't touch any metal parts
- Don't travel or go for a walks in the forest or mountains
- Alert the fire brigade immediately if you see a fire start

EXTREME COLD

- Wear warm clothes and remove any wet items
- Air your home once a day
- Call 115 if you see anyone in need of help
- Stay in touch with vulnerable friends or family members

HEATWAVES

- Limit any journeys
- If you do go out, wear a hat and light-coloured, loose (cotton) clothes
- Keep windows shut when outside temperatures are higher than indoors. Open them at night to allow air to circulate. Half-close shutters and blinds facing the sun
- Take refuge in a cool spot for at least 2-hours a day
- Drink as much as possible, even when you're not thirsty. Avoid alcohol as this exacerbates dehydration
- Check on close family or friends who live on their own, are vulnerable or dependent on assistance and help them to eat and drink.

HIGH WINDS

BEFORE

- Store or tie down objects likely to blow away
- Shelter in a permanent building, closing doors and shutters

DURING

- Don't go outside under any circumstances
- Unplug electrical appliances and devices

AFTER

- Repair what can easily be reinstated (especially roofs)
- Watch out for fallen power and telephone lines and trip hazards (chimneys, roofs, poles and posts, etc.)
- Cut down branches and trees that may fall

Risk management measures

Météo France's **weather warning map** is updated at least twice a day (at 6 am and 4 pm), or more frequently as weather events change. It informs the population about a possible dangerous weather event within 24-hours. Radio, television and internet relay information when the two highest levels are reached (orange and red).

The weather warning map covers the following events: high winds, high waves and storm surges, rainfall and flooding, thunderstorms, snow and ice, avalanches, heatwaves, and extreme cold.

Specific protective measures can be triggered via the ORSEC Plan for extreme cold or heatwaves.

View the weather warning map for further information :





DAM FAILURES

BEFORE

- Familiarise yourself with areas of high ground for safety and escape routes
- Recognise the tsunami alert (foghorn)

DURING

- Evacuate on foot and go to the nearest areas of higher ground, or the upper floors of solid buildings
- Don't turn back
- Don't take the lift

AFTER

- Air and disinfect rooms
- Only switch the electricity back on once the system is dry
- Turn the heating on as soon as possible

Safety guidance Key points



Don't use the telephone



Listen to the radio



Leave children in school



Move to higher ground



Move to upper floors



TRANSPORTING HAZARDOUS MATERIAL

IF YOU WITNESS AN ACCIDENT

- Alert the fire brigade or police with:
 - The exact location of the accident
 - The type of transport involved
 - The type of accident

IF A SPILL OCCURS

- Go to the nearest building and stay there
- Don't touch or come into any contact with the substance, don't smoke
- Vacate the accident site in the opposite direction of the wind to avoid inhaling any eventual poisonous gas

ONCE THE ALERT IS OVER

- Air the place you sheltered in
- If you think you have come into contact with the substance or feel some irritation, shower, change clothes and consult a doctor

Safety guidance Key points



Don't use the telephone



Call emergency services



No naked flames or sparks



Switch off gas and electricity



Leave children in school



Take shelter in a permanent building



Listen to the radio

RAINFALL-FLOODING

the 8 actions to take

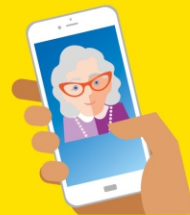
in the event of heavy Mediterranean rainfall



Stay informed
and listen to the authorities' instructions in the media and on social networks by following the official accounts



Do not go out in your car and postpone any journeys



Keep an eye on loved ones, neighbours and vulnerable people



Keep away from waterways
keep clear of riverbanks and bridges



Do not go out
Take shelter in a building. Do not take shelter beneath a tree due to the risk of lightning



Don't go down into the basement, take shelter above ground, high up



Do not go anywhere in your vehicle or on foot
Submersible bridge, ford, underpass... Less than 30cm of water is enough for a car to be swept away



Don't go and pick up your children from school, they are safe there

pluie-inondation.gouv.fr

[#rainfallflooding](https://twitter.com/rainfallflooding)

FAMILIARISE YOURSELF WITH THE VIGILANCE LEVELS

- Dangerous phenomena which are exceptionally intense
- Dangerous and widespread phenomena
- Dangerous and local phenomena

ALWAYS HAVE A SAFETY KIT TO HAND

Radio and flashlights with spare batteries, candles, lighters or matches, non-perishable food and drinking water, medicine, spare pair of glasses, warm clothing, spare keys, copy of identity documents, first aid kit, cash, mobile phone charger, baby items, pet food.

MAKE A NOTE OF USEFUL NUMBERS

Town hall
112 ou **18** Fire brigade
114 for the deaf and hard of hearing
15 Ambulance
17 Police

Hôtel du département de l'Aude
Allée Raymond Courrière
11 855 CARCASSONNE Cedex 09
04 68 11 63 02
contact@smmar.org / www.smmar.org



EPTB AUDE
SMMAR
DES RIVIÈRES & DES HOMMES

Websites

- > Capendu Municipal Council : www.mairie-capendu.fr
- > Aude Departmental Council for traffic information : www.inforoute11.fr
- > Prefecture - Aude : www.aude.gouv.fr
- > Joint Association for Aquatic Environment and Rivers : www.smmar.org
- > Météo France : www.meteofrance.com
- > French government website for the prevention of major risks : www.georisques.gouv.fr
- > Cypres, French information centre on risk prevention : www.cypres.org

Usefull telephone numbers

Capendu Municipal Council : **04.68.79.15.16**
Place de la Mairie, 11 700 Capendu

Prefecture - Aude : **04.68.10.27.00**

Fire brigade : **18 ou 112 (from a mobile phone)**

Ambulance : **15**

Police : **17**

Météo-France : **05.67.22.95.00 - <http://france.meteofrance.com>**

PREDICT

20 rue Didier Daurat
34170 CASTELNAU-LE-LEZ
04 67 17 11 10
contact@predictservices.com



BRLI

1105 Av. Pierre Mendès France - BP 94001
30000 NIMES Cedex 5
04 66 87 50 00
dc.brli@brli.fr



CYPRES

Rte de la Vierge Cs1
13696 Martigues Cedex
04 42 13 01 00
cypres@cypres.org



Projet cofinancé par le Fonds Européen de Développement Régional